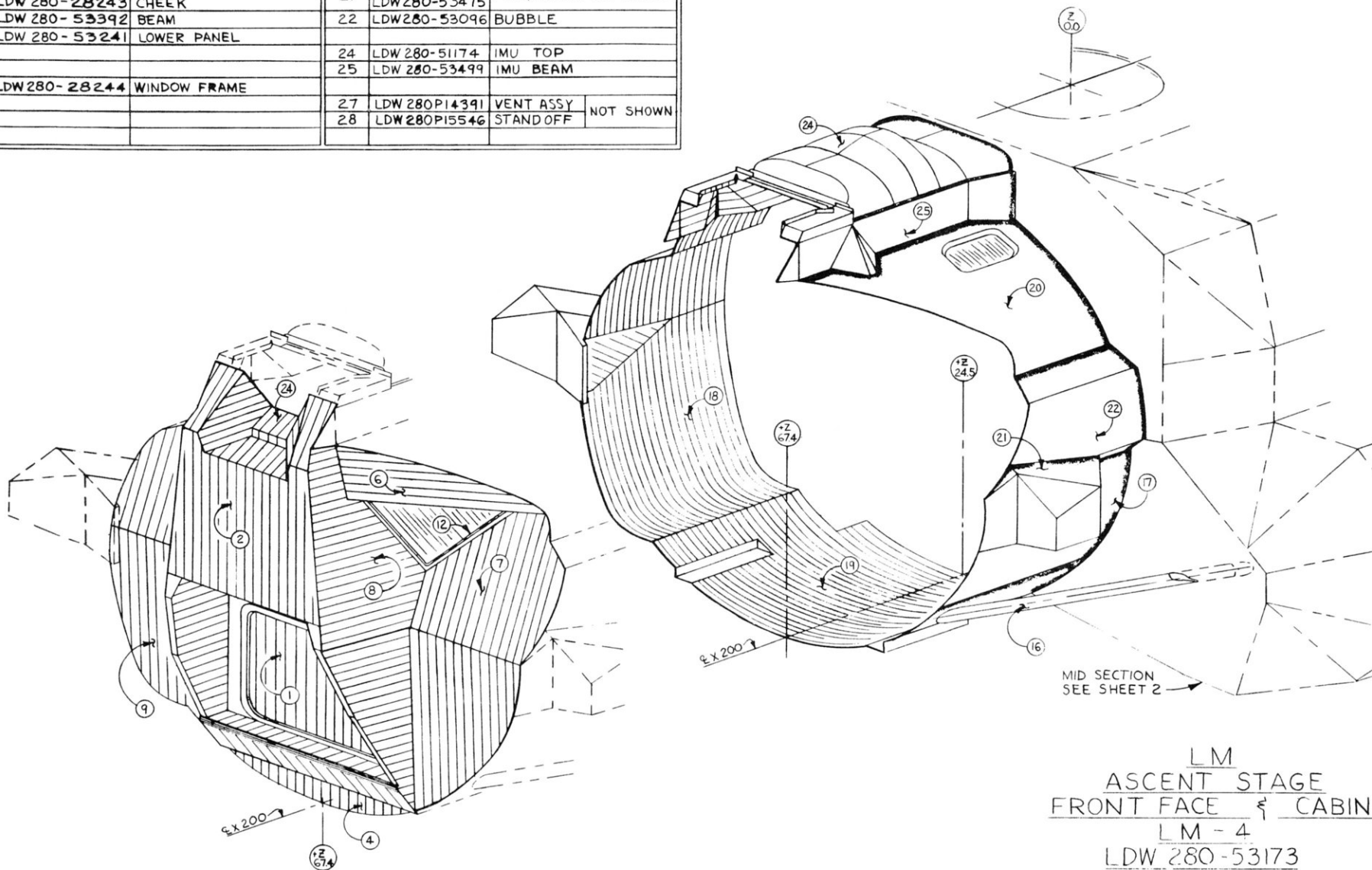


LUNAR MODULE  
STRUCTURE  
 &  
THERMAL SHIELDING

P.R.R. 7-18-67  
 ENGINEERING SCHEDULING 80 1967

SK 17-10-34

ASCENT STAGE			THERMAL SHIELD INSTL			
FRONT FACE SHIELDING			CABIN SHIELDING			
1	LDW 280-28175	FWD HATCH	16	LDW 280-53875	DRAG STRUT	
2	LDW 280-54176	CENTER PANEL	17	LDW 280-53185	L.H. LOWER SIDE	
			18	LDW 280-53186	R.H. LOWER SIDE	
4	LDW 280-53279	LOWER BULKHEAD	19	LDW 280-53178	BOTTOM	
			20	LDW 280-53347	UPPER	
6	LDW 280-28242	BROW	21	LDW 280-53179	FWD,THRUSTER CLUST.	
7	LDW 280-28243	CHEEK		LDW 280-53475		
8	LDW 280-53392	BEAM	22	LDW 280-53096	BUBBLE	
9	LDW 280-53241	LOWER PANEL				
			24	LDW 280-51174	IMU TOP	
			25	LDW 280-53499	IMU BEAM	
12	LDW 280-28244	WINDOW FRAME				
			27	LDW 280P14391	VENT ASSY	NOT SHOWN
			28	LDW 280P15546	STAND OFF	



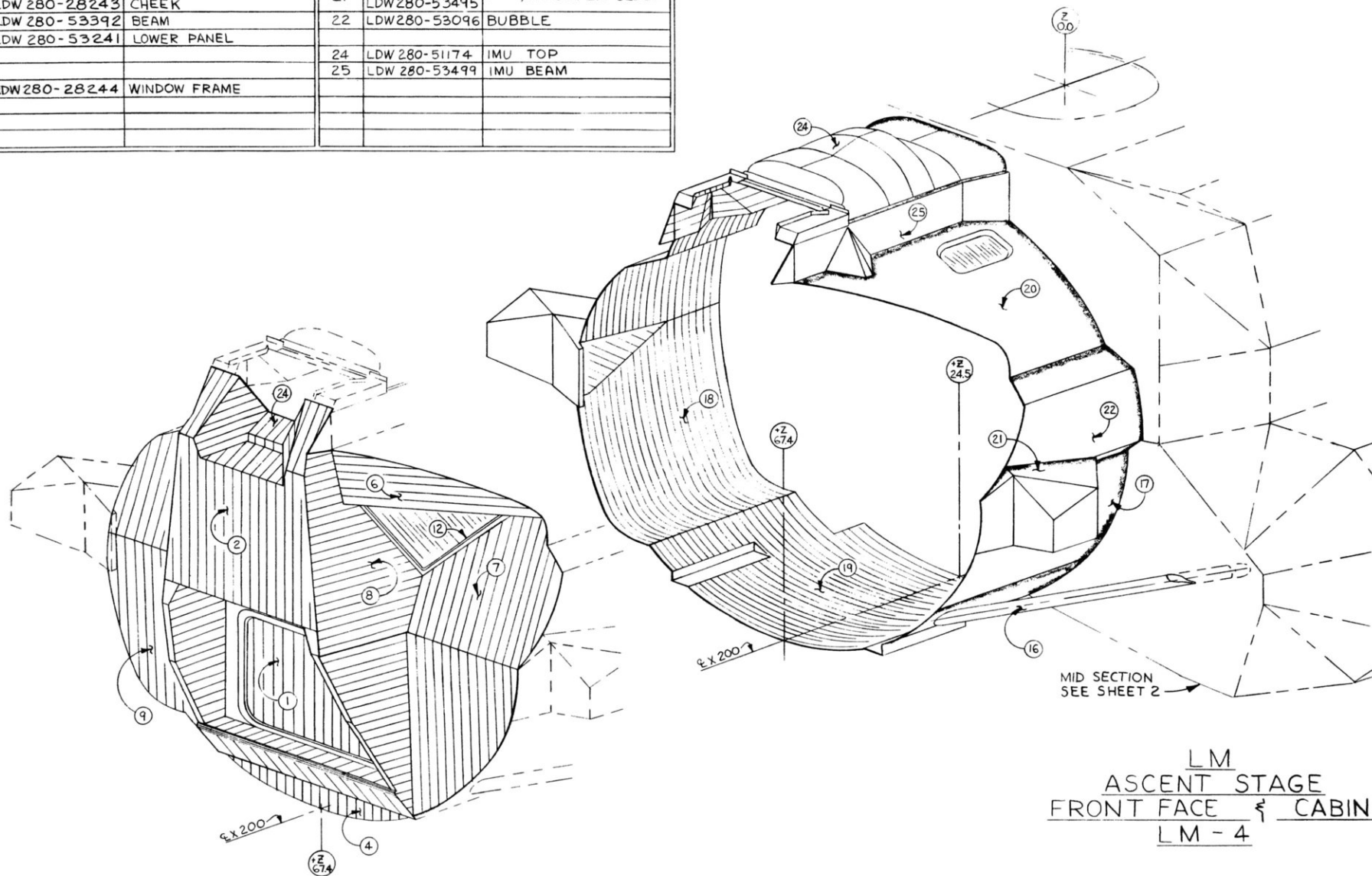
LM  
ASCENT STAGE  
FRONT FACE & CABIN  
LM - 4  
LDW 280-53173

SHEET 1

ENGINEERING SCHEDULING PRR: 4-19-67

SK 17-30-34

THERMAL SHIELDING			INSTL LDW 280-53173		
FRONT FACE SHIELDING			CABIN SHIELDING		
1	LDW 280-28175	FWD HATCH	16	LDW 280-53875	DRAG STRUT
2	LDW 280-54176	CENTER PANEL	17	LDW 280-53185	L.H. LOWER SIDE
			18	LDW 280-53186	R.H. LOWER SIDE
4	LDW 280-53279	LOWER BULKHEAD	19	LDW 280-53178	BOTTOM
			20	LDW 280-53347	UPPER
6	LDW 280-28242	BROW	21	LDW 280-53179	FWD THRUSTER CLUST.
7	LDW 280-28243	CHEEK	22	LDW 280-53096	BUBBLE
8	LDW 280-53392	BEAM			
9	LDW 280-53241	LOWER PANEL			
12	LDW 280-28244	WINDOW FRAME	24	LDW 280-51174	IMU TOP
			25	LDW 280-53499	IMU BEAM



LM  
ASCENT STAGE  
FRONT FACE & CABIN  
LM - 4

ENGINEERING SCHEDULING PRR. 7-19-67  
4-19-67

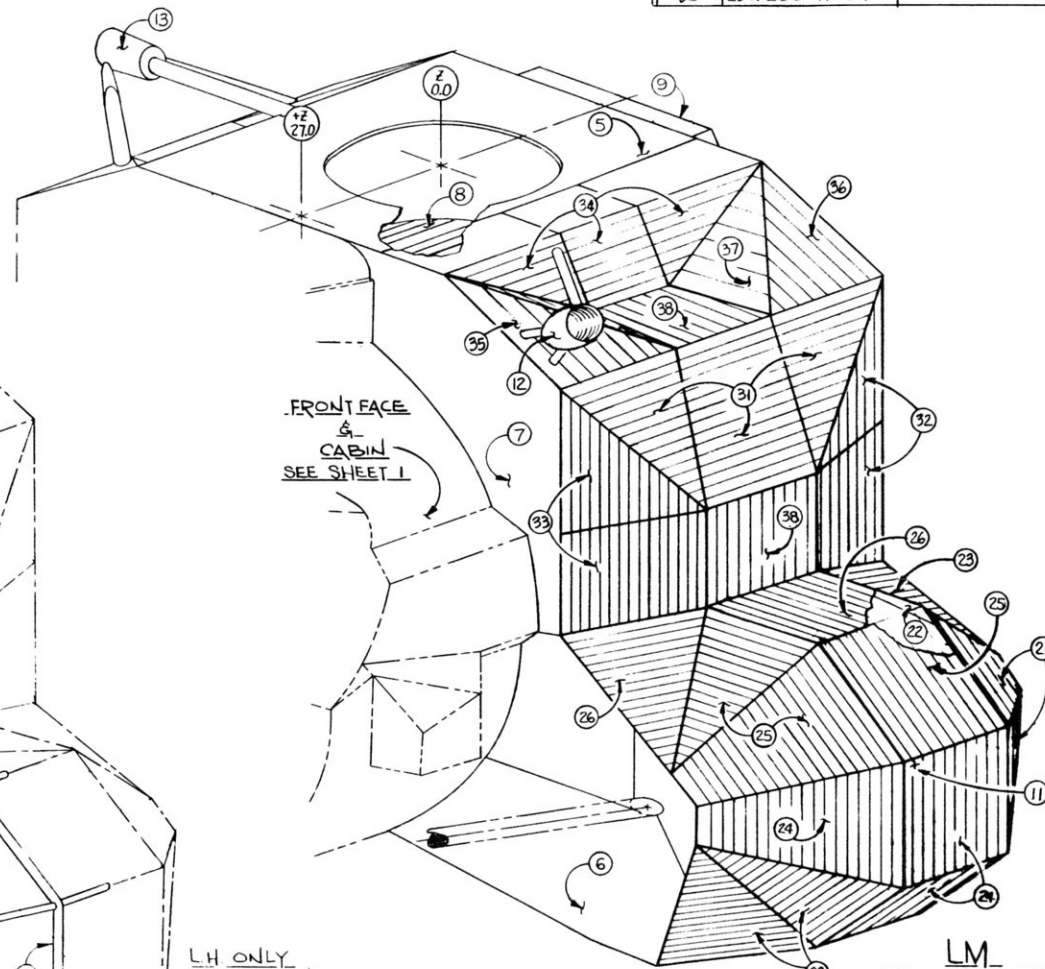
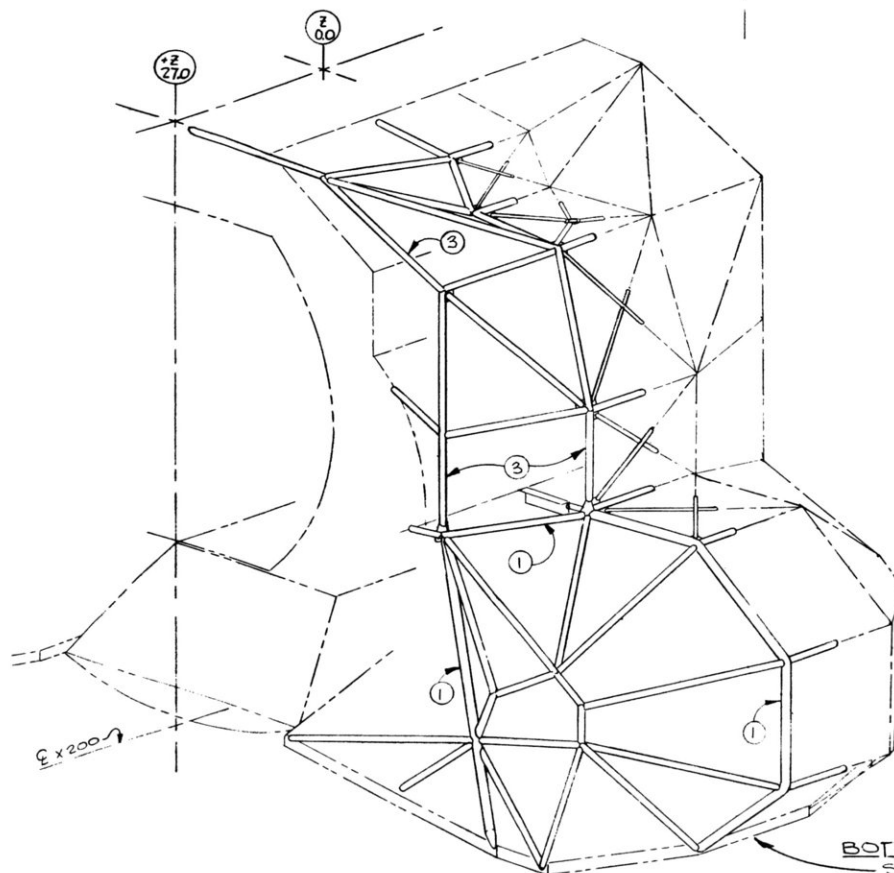
SHEET 1

SK 17-30-34

THERMAL SHIELDING LDW280-54150		
ITEM	DRAWING	TITLE
1	LDW280-53155	CAGE INSTL L.H. TANK
	LDW280-53226	CAGE ASSY L.H. TANK
2	LDW280-53160	SHLD INSTL L.H. TANK
3	LDW280-53381	CAGE INSTL L.H. & R.H. SIDE
	LDW280-53382	CAGE ASSY L.H. & R.H. SIDE
4	LDW280-53163	SHLD INSTL L.H. & R.H. SIDE
5	LDW280-53861	SHIELD, TOP x 312 1/2
6	LDW280-53851	SHLD, FWD & AFT, TANKS
7	LDW280-53852	SHLD, FWD & AFT, BLKHD
8	LDW280-53282	SHLD INSTL, UPR HATCH
9	LDW280-54154	SHLD INSTL, UPR BLKHD
11	LDW280-28398	BRKT, DOCKING LIGHT
12	LDW280-28895	FWD, VHF ANTENNA
13	LDW280-28885	STEERABLE ANTENNA

② SHLD INSTL L.H. TANK LDW280-53160		
ITEM	DRAWING	TITLE
21	LDW280-11635	SHIELD
22	LDW280-11636	"
23	LDW280-11637	"
24	LDW280-11638	"
25	LDW280-11639	"
26	LDW280-11640	"

④ SHLD INSTL L.H. & R.H. SIDE LDW280-53163		
ITEM	DRAWING	TITLE
31	LDW280-11642	SHIELD
32	LDW280-11647	"
33	LDW280-11648	"
34	LDW280-11649	" L.H. ONLY
	LDW280-11650	" R.H. ONLY
35	LDW280-11651	"
36	LDW280-11652	"
37	LDW280-11653	"
38	LDW280-11654	"



BOTTOM THERMAL ASSY.  
SEE SHEET 4

L.H. ONLY  
R.H. SEE SHEET 3

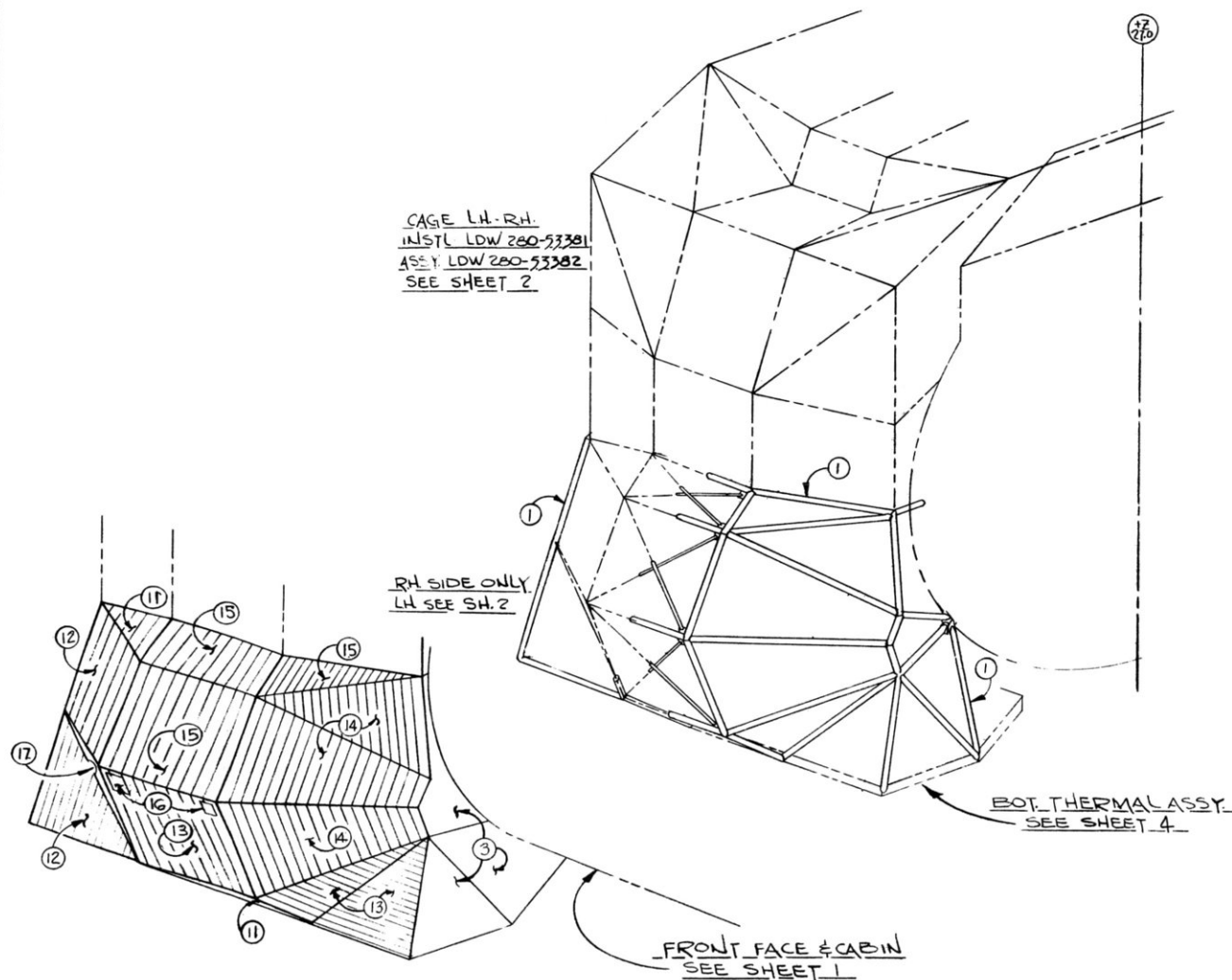
LM-4  
ASCENT STAGE  
MID SECTION  
LM-4

COMPLETE REVISION PRR-4-23-67  
ENGINEERING SCHEDULING 5/10-10-66

SHEET 2  
SK 17-30-34

THERMAL SHIELDING LDW 280-54150		
ITEM	DRAWING	TITLE
1	LDW 280-53156	CAGE INSTL, R.H. TANK
	LDW 280-53231	CAGE ASSY, R.H. TANK
2	LDW 280-53161	SHLD INSTL, R.H. TANK
3	LDW 280-53851	SHLD INSTL, FWD & AFT TK

(2) SHIELDING INSTL R.H. TK LDW 280-53161		
ITEM	DRAWING	TITLE
11	LDW 280-11641	SHIELD
2	LDW 280-11642	"
13	LDW 280-11643	"
14	LDW 280-11644	"
15	LDW 280-11645	"
16	LDW 280P11500	FARING
17	LDW 280P11517	"



LM-  
ASCENT STAGE  
MID SECTION  
LM-4

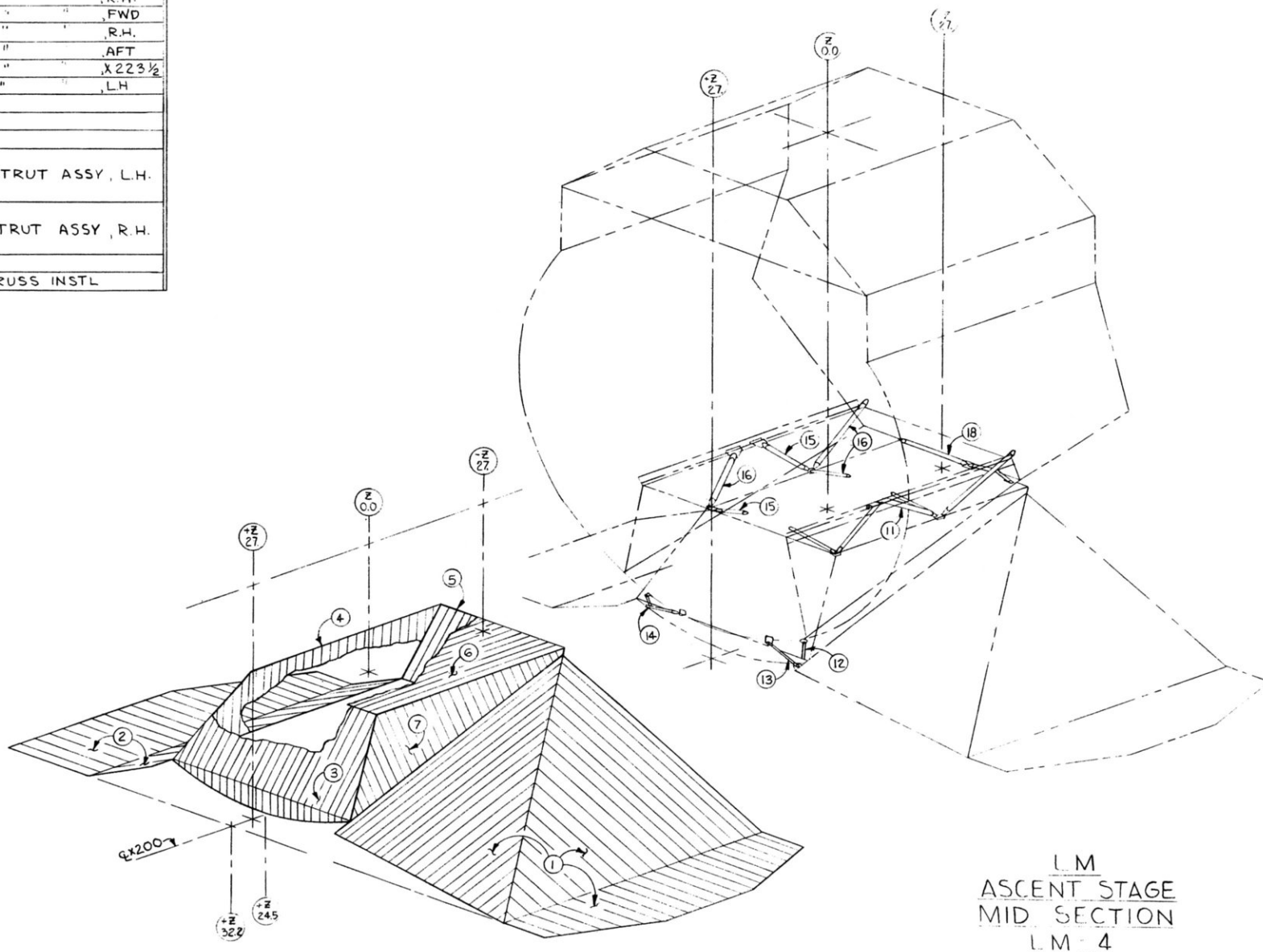
7-19-67  
COMPLETE REVISION PER: 4-26-67  
ENGINEERING SCHEDULING: 26, 10-18-67

SHEET 3

SK 17-30-34



THERMAL SHIELDING LDW 280-53153		
ITEM	DRAWING	TITLE
1	LDW 280-53159	PANEL INSTL L.H.
2	LDW 280-53162	" " R.H.
3	LDW 280-53203	" " FWD
4	LDW 280-53222	" " R.H.
5	LDW 280-53223	" " AFT
6	LDW 280-53224	" " X 223 1/2
7	LDW 280-53225	" " L.H.
11	LDW 280-28866	
12	LDW 280-28877	STRUT ASSY, L.H.
13	LDW 280-28879	
14	LDW 280-28481	
15	LDW 280-28867	STRUT ASSY, R.H.
16	LDW 280-53867	
18	LDW 280-53165	TRUSS INSTL



LM  
ASCENT STAGE  
MID SECTION  
LM-4

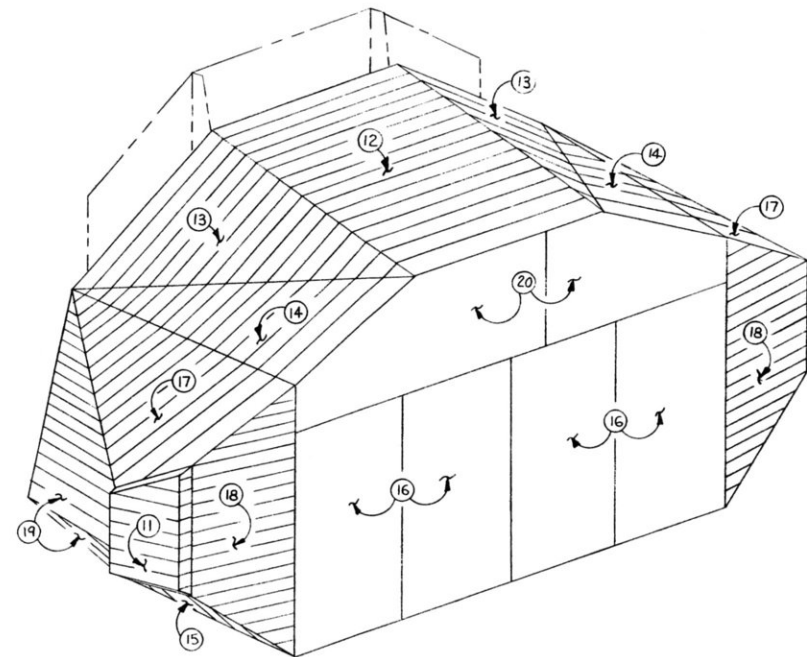
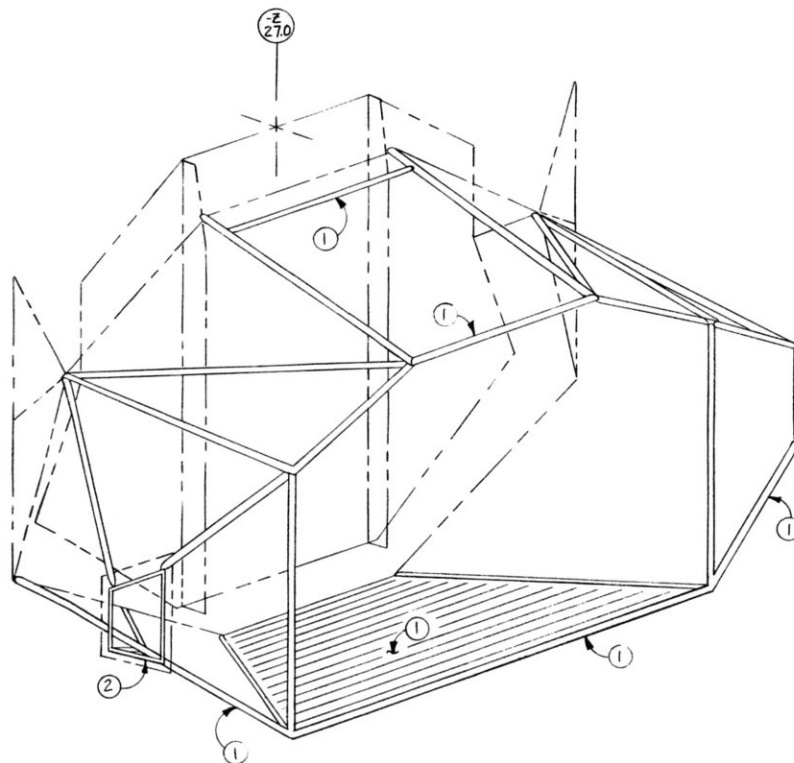
ENGINEERING SCHEDULING PRK. 4-7-67

SHEET 4

SK-17-30-34

THERMAL SHIELDING LDW 280-54450		
1	LDW 280-53451	CAGE ASSY
	LDW 280-51454	PANEL ASSY
2	LDW 280-53452	SUPT INSTL RCS AFT
3	LDW 280-54453	SHIELD INSTL

③ SHIELDING INSTL LDW 280-54453		
11	LDW 280-54871	SHLD INSTL RCS AFT
12	LDW 280-14463	SHLD ASSY, UPR MID
13	LDW 280-14464	" " " INBD
14	LDW 280-14465	" " " OUTBD
15	LDW 280-14469	" " " LWR SIDE
16	LDW 280-14470	" " " ACCESS
17	LDW 280-14476	" " " UPR SIDE
18	LDW 280-14477	" " " AFT SIDE
19	LDW 280-14478	" " " SIDE ACC
20	LDW 280-53461	UPR AFT ACCESS PNL



LM  
ASCENT STAGE  
AFT EQUIPMENT BAY  
LM-4

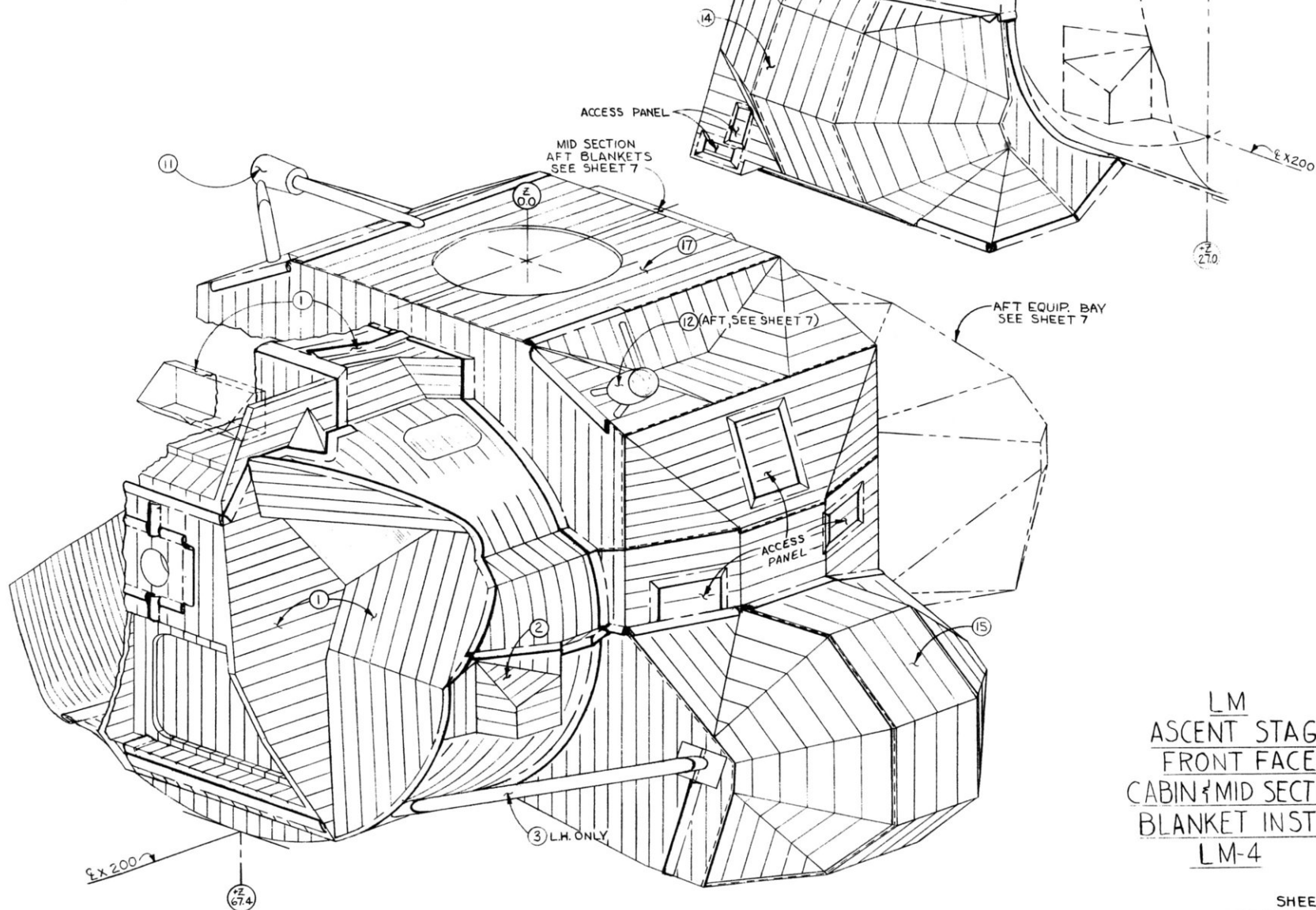
ENGINEERING SCHEDULING PRR 7-19-67  
5-2-67

SHEET 5

SK 17-30-34



ASCENT STAGE, BLANKET INSTL					
FRONT FACE & CABIN LDW280-53173			MID SECTION		LDW280-54150
1	LDW280-53173	FRONT FACE & CABIN	11	LDW280-28885	STEERABLE ANTENNA
2	LDW280-52180	RCS, FWD R.H. & L.H.	12	LDW280-28895	FWD, VHF ANTENNA
3	LDW280-53875	DRAG STRUT	14	LDW280-53853	OXIDE TANK, R.H. SIDE
			15	LDW280-53854	FUEL TANK, L.H. SIDE
			17	LDW280-53856	UPPER R.H. & L.H. SIDE

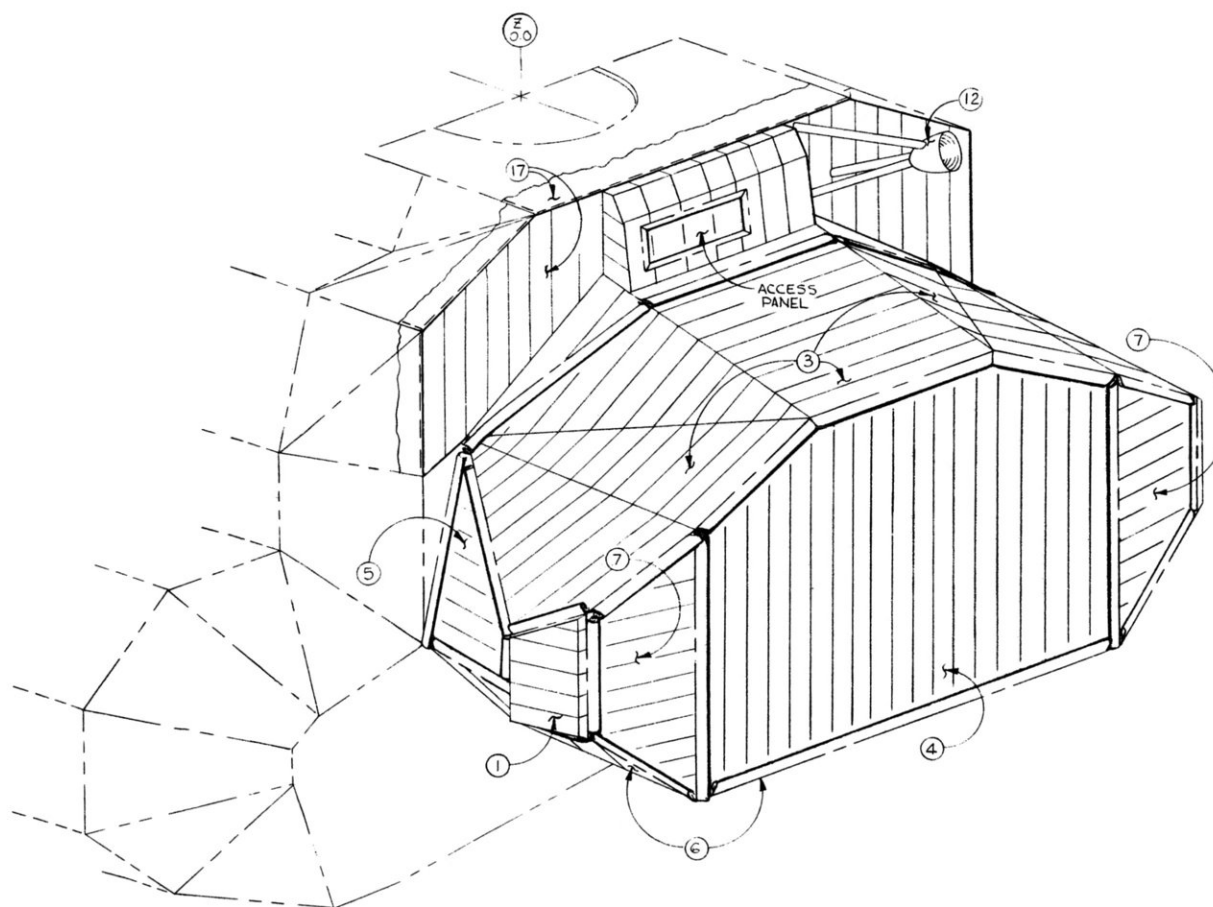


LM  
ASCENT STAGE  
FRONT FACE  
CABIN & MID SECTION  
BLANKET INSTL  
LM-4

ENGINEERING SCHEDULING P.R.R. 4-H-67

ASCENT STAGE, BLANKET INSTALLATIONS		
AFT EQUIPMENT BAY LDW280-54453		
1	LDW280-28897	RCS, AFT R.H. & L.H.
3	LDW280-14435	BLANKET, TOP
4	LDW280-14436	BLANKET, BACK
5	LDW280-14437	BLANKET, RH. & LH. SIDE
6	LDW280-14438	BLANKET, BOTTOM
7	LDW280-14439	BLANKET, R.H. & L.H. BACK

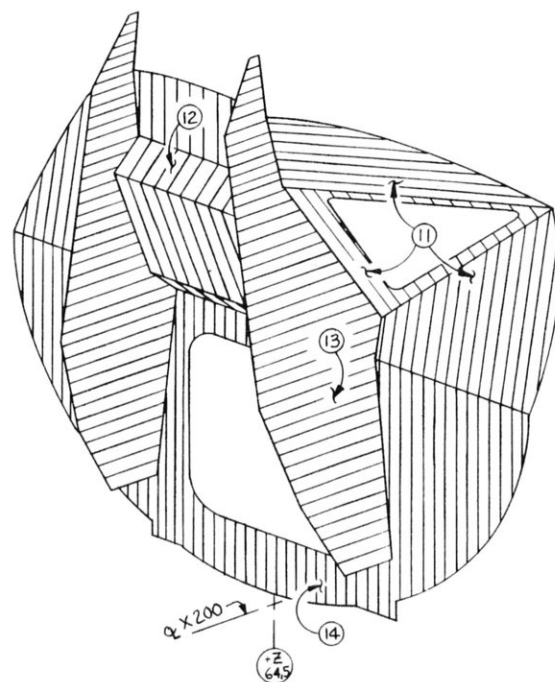
MID SECTION SEE SHEET 6		
12	LDW280-28895	AFT, VHF ANTENNA
17	LDW280-53856	UPPER R.H. & L.H. SIDE



LM  
ASCENT STAGE  
AFT EQUIPMENT BAY  
BLANKET INSTL  
LM-4

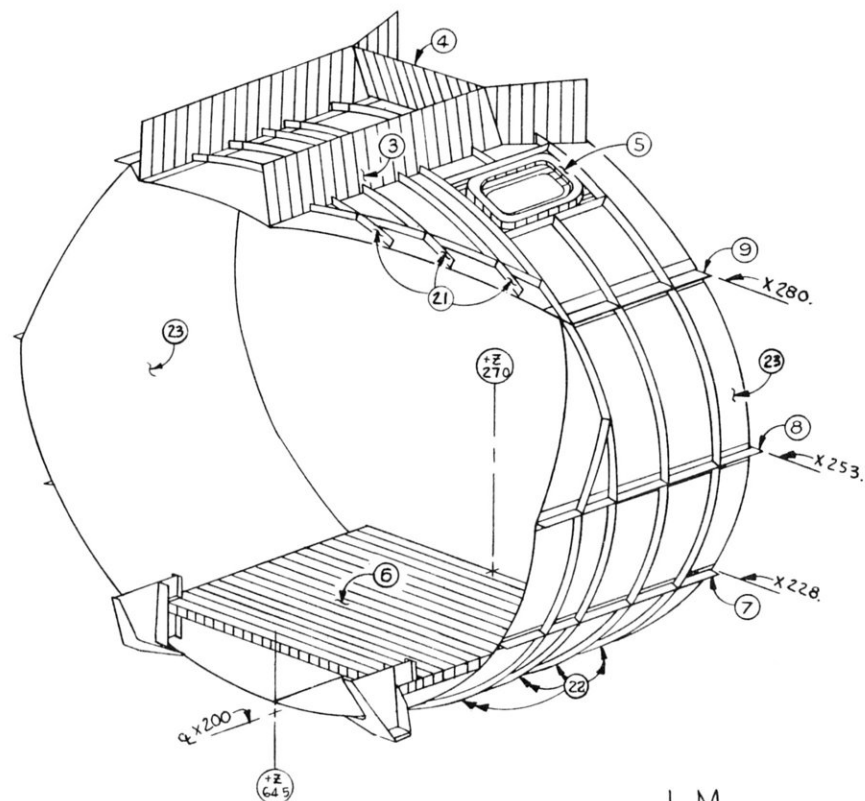
SHEET 7

CABIN PRIME STRUCTURE LDW280-54010		
ITEM	DRAWING	TITLE
1	LDW280-54075	FACE ASSY
	LDW280M54137	FRONT FACE MACHINING
2	LDW280-54051	CABIN SKIN INSTL
3	LDW280-23031	IMU BEAM INSTL
4	LDW280-23114	FRAME INSTL CANTED
5	LDW280-53023	CABIN WINDOW INSTL UPR
6	LDW280H23060	FLOOR ASSY # INSTL
7	LDW280-23025	LONGERON INST X228R.H.
	LDW280-23049	LONGERON INST X228L.H.
8	LDW280-23047	LONGERON INST X252-X253
9	LDW280-23048	LONGERON INST X280



① FRONT FACE MACHINING LDW280M54137 FRONT FACE ASSY LDW280-54011		
ITEM	DRAWING	TITLE
11	LDW280-23015	PNL ASSY CHEEK, BROW WIND
12	LDW280-23016	PNL ASSY UPR CENTER
13	LDW280M10440	WEB BEAM
14	LDW280M10392	BULKHEAD UPR

② CABIN SKIN INSTL LDW280-54051		
ITEM	DRAWING	TITLE
21	LDW280-23021	FRAME INSTL UPR
22	LDW280-23074	FRAME INSTL
23	LDW280-23013	SKIN ASSY



LM  
ASCENT STAGE  
FRONT FACE & CABIN  
LM-4

ENGINEERING SCHEDULING PRR 5-8-67

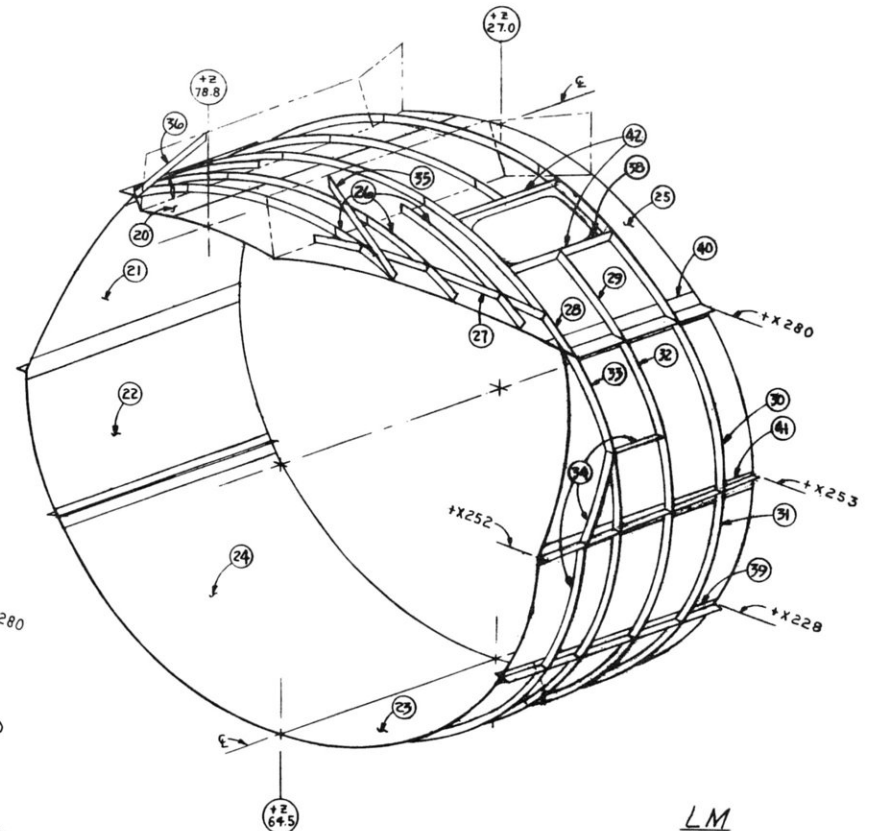
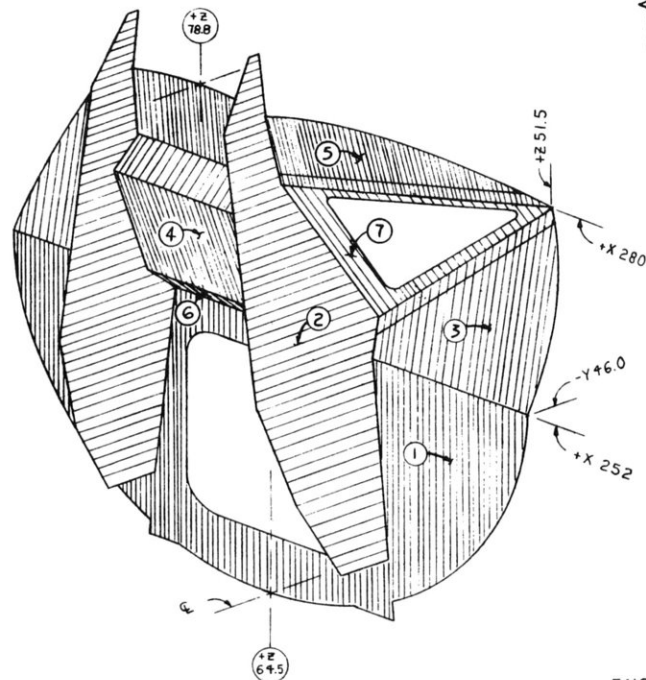
SK 17-31-34

# CABIN - LDW280-54031

ITEM	DRAWING	TITLE
20	LDW280-10409	SKIN-RH UPPER
21	LDW280-10410	" X280 TO 252, R&L.H.
22	LDW280-10411	" X252 TO 228, R&L.H.
23	LDW280-10412	" L.H. LOWER
24	LDW280-10413	" R.H. LOWER
26	LDW280-10530	FRAME +Z67, 61, 55
27	LDW280-10531	" BROW
28	LDW280-10492	" +Z51, FROM X280 UPPER
29	LDW280-10499	" +Z42, " " " "
30	LDW280-10501	" +Z33, " " " "
31	LDW280-10502	" " " " " LOWER
32	LDW280-10500	" +Z42 " X280 " "
33	LDW280-10493	" +Z51 " " " "
34	LDW280-10534	" +Z58 " X252 " "
35	LDW280-10248	STRUCT ASSY - Z67 LEFT HAND
36	LDW280-10251	STRUCT ASSY +Z67 RIGHT HAND
38	LDW280M10563	FRAME, WINDOW, UPPER
39	LDW280-23049	LONGERON (CRUCIFORM) L.H. X228
40	LDW280-23048	" " " X280
41	LDW280-23047	" " " X252
42	LDW280-10310	FRAME, WINDOW

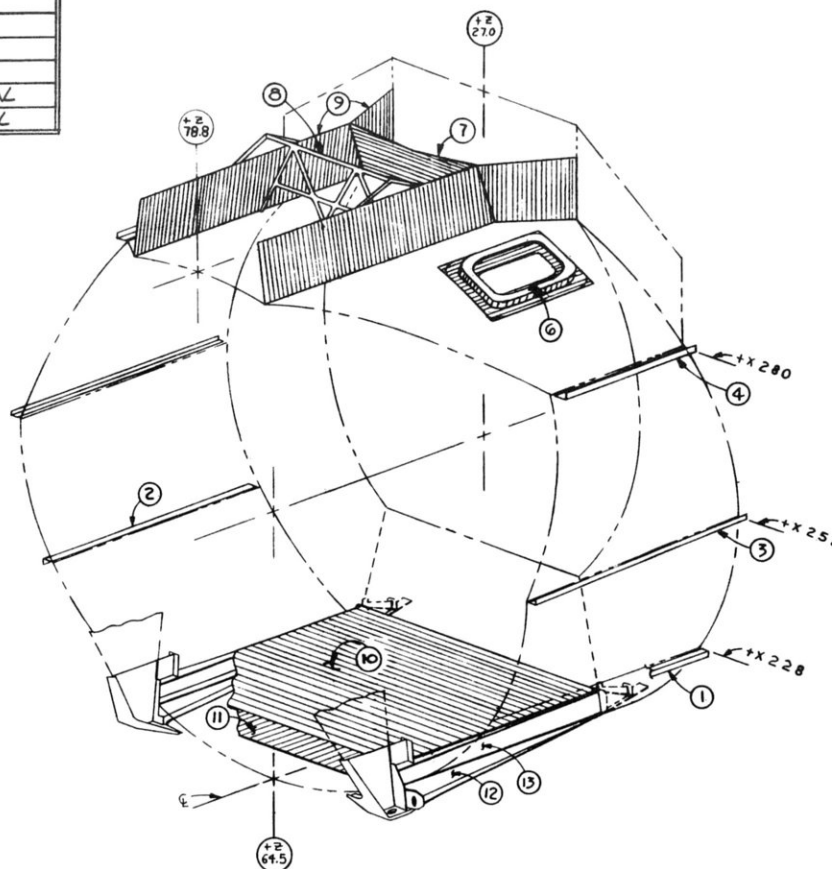
# FRONT FACE - LDW280-54011

ITEM	DRAWING	TITLE
1	LDW280M10392	BULKHEAD, LOWER F/F
2	LDW280M10440	WEB F/F BEAM
3	LDW280M10366	PANEL, CHEEK
4	LDW280-23016	PANEL F/F CENTER
5	LDW280-23045	F/F ASSY, BROW
6	LDW280-10474	PANEL F/F, CAUTED
7	LDW280M10367	FRAME ASSY CAB, WINDOW



LM  
ASCENT STAGE  
FRONT FACE & CABIN  
LM-4

CABIN ASSY		
ITEM	DRAWING	TITLE
1	LDW280-23049	LONGERON INSTL. X288 LH.
	LDW280M10791	CAPSTRIP X288 LH.
2	LDW280-23025	LONGERON INSTL X288 R.H.
	LDW280M10539	CAPSTRIP X288 RH
3	LDW280-23047	LONGERON INSTL X252
	LDW280M10470	CAPSTRIP X252
4	LDW280-23048	LONGERON INSTL. X280
	LDW280M10499	CAPSTRIP X280
6	LDW280-53023	WINDOW INSTL, UPPER DOCKING
7	LDW280-23114	PANEL - Z39 CANTED
8	LDW280-23066	FRAME INSTL - Z55, NAV. BASE SUPT.
9	LDW280-23031	BEAM INSTL., IMU
10	LDW280H23060	FLOOR ASSY & INSTL.
11	LDW280-10475	BEAM INSTL. - X218, ZY22
12	LDW280M10497	FITTING FWD INTERSTAGE, EXTERNAL
13	LDW280M10495	" " " " INTERNAL



LM  
ASCENT STAGE  
CABIN ASSY  
LM-4

# 50 MID SECTION STRUCTURE LDW 280-54012

ITEM	DRAWING	TITLE
1	LDW 280-54020	SKIN INSTL
2	LDW 280-54027	DECK ASSY X310
3	LDW 280-23035	" " " X294
4	LDW 280-23032	" " " INST X277
5	LDW 280-23029	" " " INSTL X253
6	LDW 280-23028	BEAM ASSY INST ±Y17
7	LDW 280-54030	" " " ±Y22
8	LDW 280-23044	WEB INSTL ±Y36 3/4
	LDW 280-23077	BEAM INST, ENG FWD
9	LDW 280-53078	" " " AFT
	LDW 280-53079	" " " SIDES
10	LDW 280-54019	STIFFENER INSTL-Z27
11	LDW 280-23053	WATER TANK INSTL

## (1) SKIN INSTL LDW 280-54020

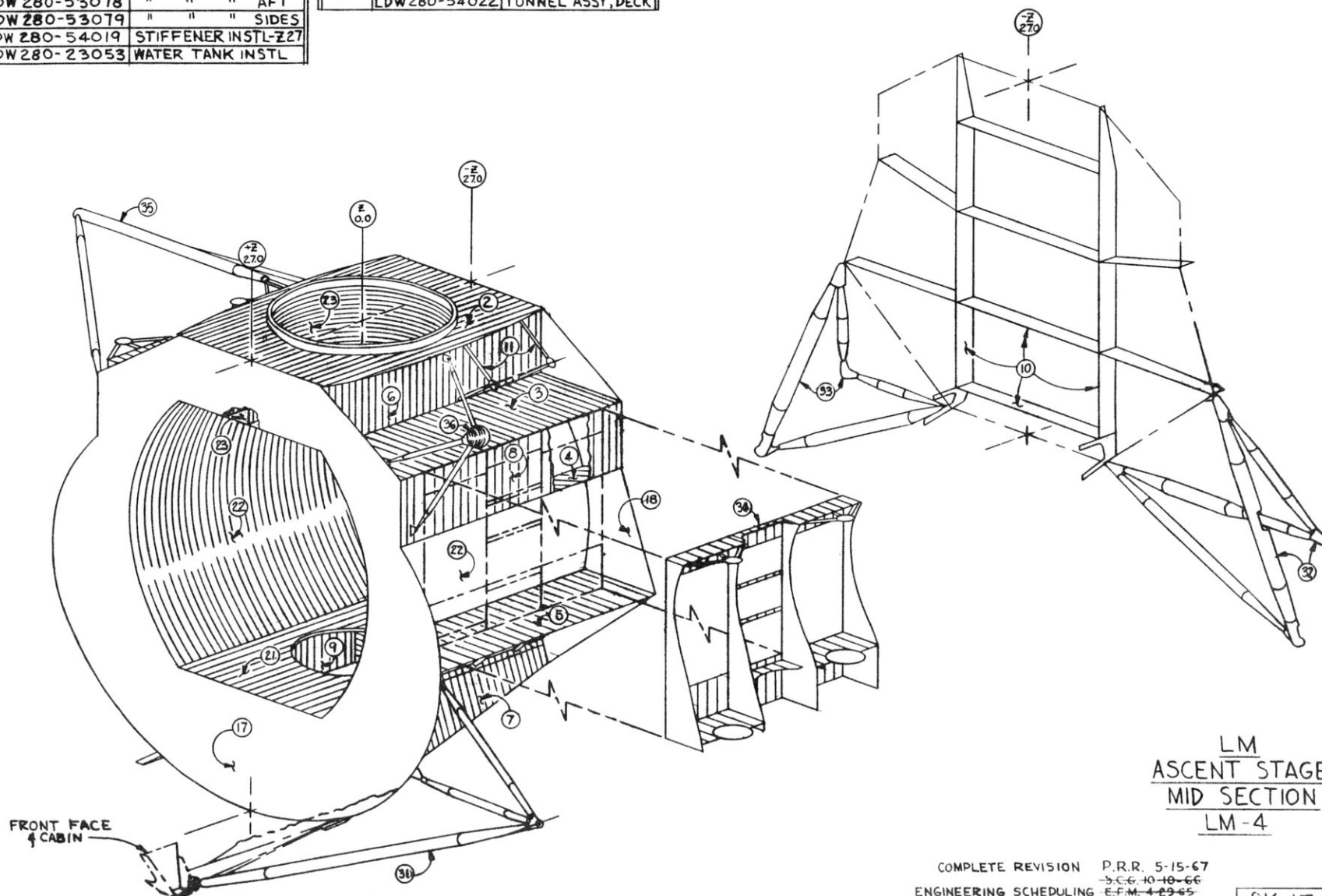
16	LDW 280-54041	SKIN WELD DECK ASSY
17	LDW 280M10772	BULKHEAD, FWD
18	LDW 280M10735	" " " AFT

## (6) SKIN WELD DECK ASSY LDW 280-54041

21	LDW 280M10434	DECK, LOWER
22	LDW 280-23014	SKIN ASSY
23	LDW 280-54017	DECK ASSY, UPR
	LDW 280-54022	TUNNEL ASSY, DECK

## STRUCTURE ASSY A/S LDW 280-54002

ITEM	DRAWING	TITLE
31	LDW 280-53024	TRUSS INSTL TANK SUPT
32	LDW 280-54036	" " " AFT L.H.
33	LDW 280-54037	" " " R.H.
34	LDW 280-54144	RCS MODULE INSTL SUPT
35	LDW 280-23256	STEERABLE ANT SUPT
36	LDW 280-23257	FWD VHF ANTENNA SUPT
38	LDW 280-54012	MID SECTION STRUCTURE



SK 17-32-34

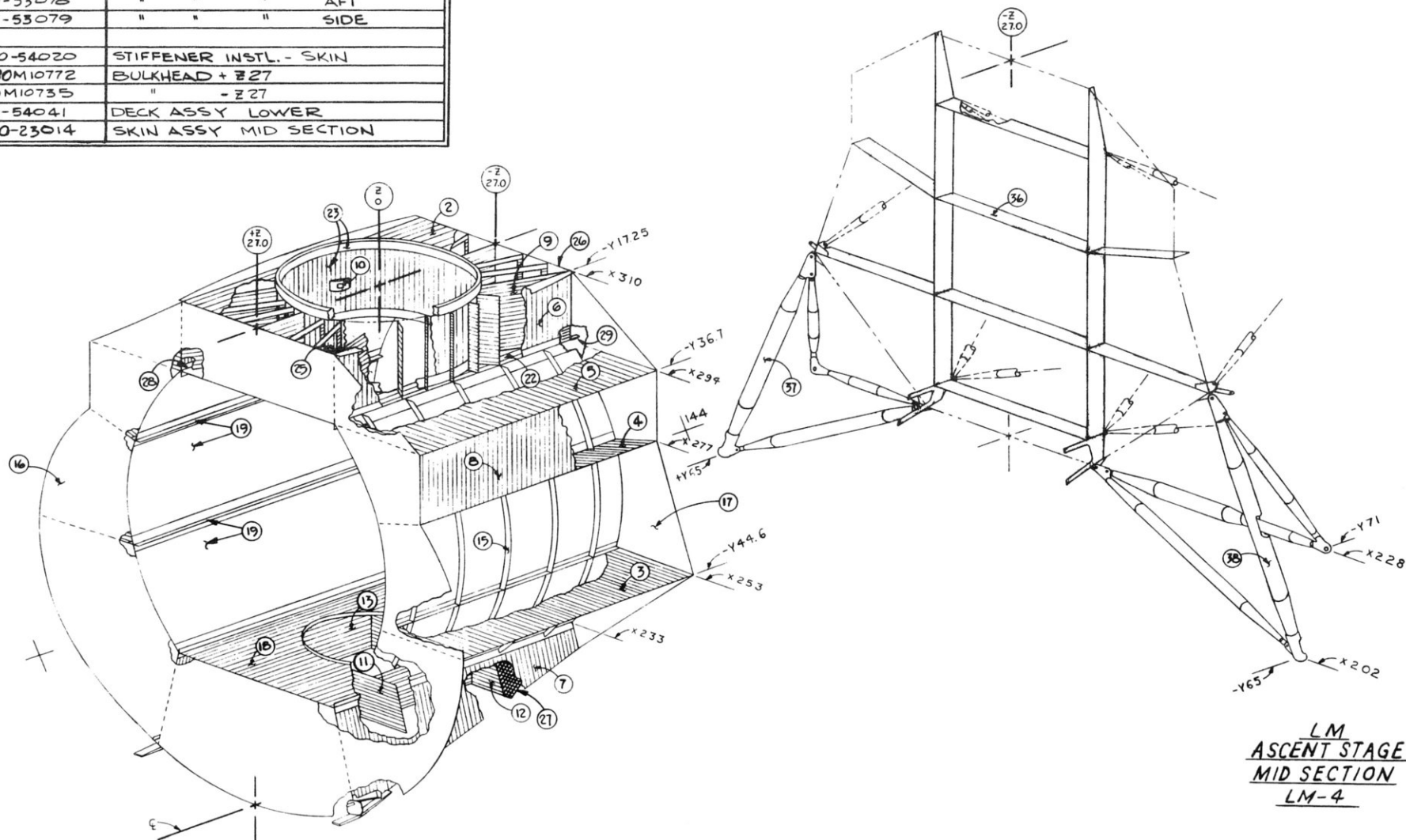


# MID SECTION STRUCTURAL ASSEMBLY LDW280-54012

ITEM	DRAWING	TITLE
2	LDW280-54027	DECK ASSY X310
3	LDW280-23029	DECK INSTL X253
4	LDW280-23032	DECK ASSY & INSTL X277 CANTED
5	LDW280-23035	" " " " X294
6	LDW280-23028	BEAM ASSY & INSTL ±Y17.25
7	LDW280-54030	" " " " ±Y22
8	LDW280-23044	WEB INSTL ±Y36.7
9	LDW280-53050	" " DOCKING TUNNEL
10	LDW280-52076	FTG INSTL DKG.TNL DROGUE SUPT.
11	LDW280-23077	BEAM INSTL. ENGINE; FORWARD
12	LDW280-53078	" " " " AFT
13	LDW280-53079	" " " " SIDE
15	LDW280-54020	STIFFENER INSTL. - SKIN
16	LDW280M10772	BULKHEAD + Z27
17	LDW280M10735	" - Z27
18	LDW280-54041	DECK ASSY LOWER
19	LDW280-23014	SKIN ASSY MID SECTION

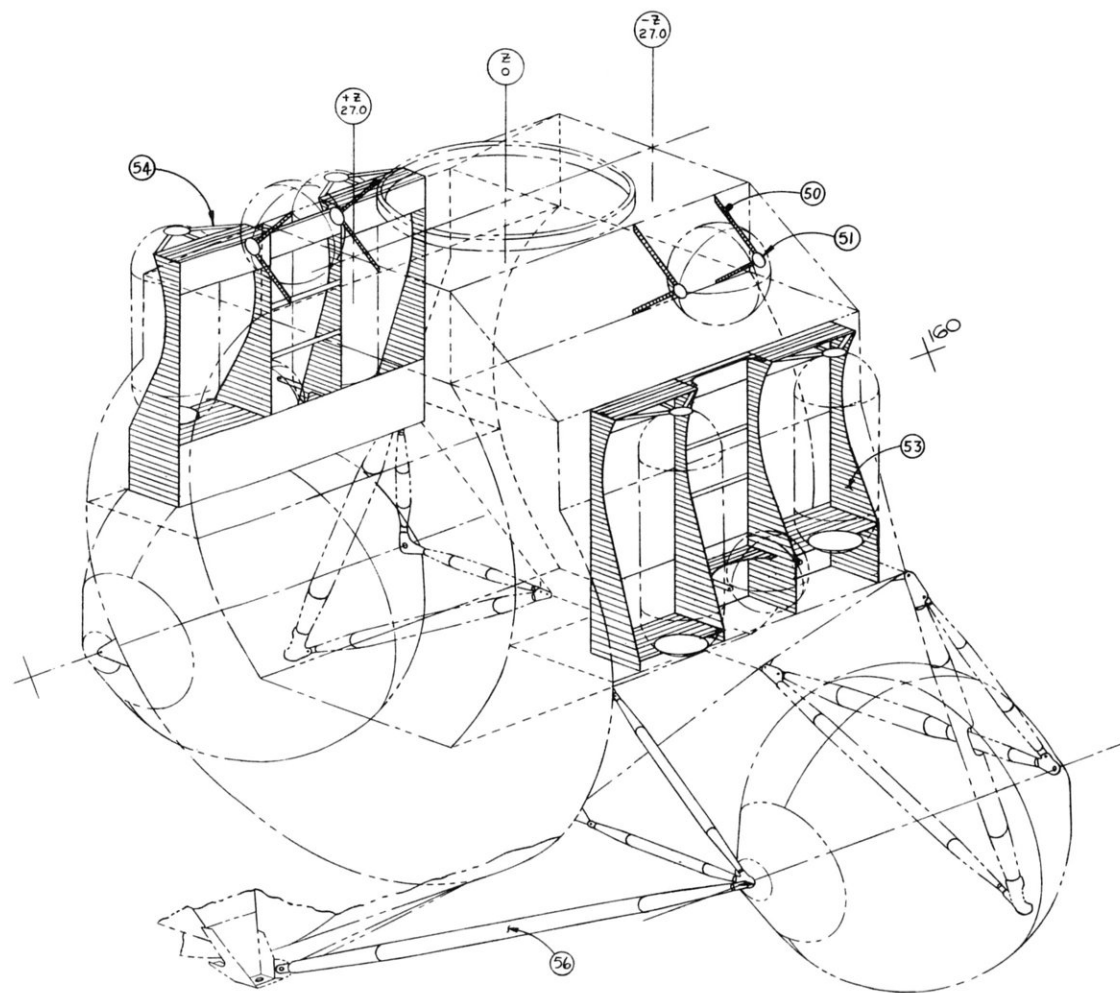
ITEM	DRAWING	TITLE
22	LDW280-54017	DECK ASSY UPPER X294
23	LDW280-54022	TUNNEL ASSY-UPPER DOCKING
25	LDW280-23126	FITTING INSTL + Z27, ±Y17.25
26	LDW280-23127	" " - Z27, ±Y17.25
27	LDW280-53100	STIFFENER INSTL. LOWER DECK
28	LDW280-23124	FITTING INSTL + Z27 ±17.25
29	LDW280-23125	" " - Z27 ±17.25

ITEM	DRAWING	TITLE
36	LDW280-54019	STIFFENER INSTL - Z27 BULKHEAD
37	LDW280-54036	AFT INTER STAGE TRUSS, LH.
38	LDW280-54037	" " " " , RH.



## MID SECTION

ITEM	DRAWING	TITLE
	LDW280-23053	TANK INSTL-WATER
50	LDW280M10435	FITTING, WATER TANK, LWR SUPPORT
51	LDW280M10285	RETAINER, WATER TANK
	LDW280-54026	TANK SUPT. ASSY & INSTL, RCS
53	LDW280-10546	FRAME, TANK SUPT, RCS
54	LDW280-10556	ANGLE TANK SUPT, RCS
56	LDW280-23024	TANK SUPPORT ASSY-FUEL



LM  
ASCENT STAGE  
MID SECTION  
LM-4

ENGINEERING SCHEDULING - E.F.M. 4-29-65

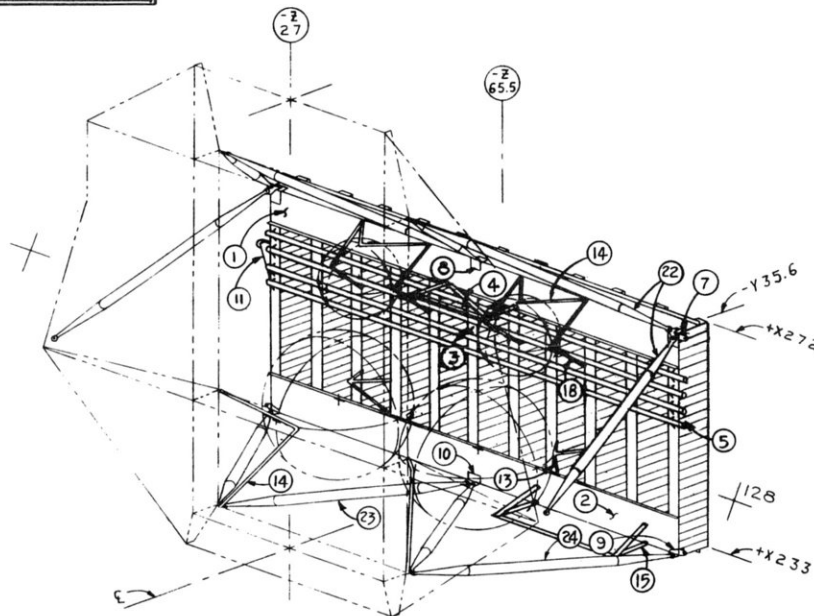
SHEET 2

SK17-32-34

# RACK ASSY LDW280-54405

ITEM	DRAWING	TITLE
1	LDW280-14112	BEAM ASSY, HORIZ-UPR KE72
2	LDW280-14113	" " " LWR K233
3	LDW280-54406	BEAM ASSY, VERT-E
	LDW280-54407	" " " ±Y7
	LDW280-54408	" " " ±Y14
	LDW280-54409	" " " ±Y21
	LDW280-54410	" " " ±Y28
	LDW280-54411	" " " ±Y35
4	LDW280-23421	SUPT. INSTL. UPPER CENTER
5	LDW280-28418	SUPT. INSTL. RCS
7	LDW280M14042	FITTING -Z60.5 UPR OUTBD
8	LDW280M14043	" " " ±
9	LDW280M14044	" " " LWR CUTBD
10	LDW280M14045	" " " ±
11	LDW280-23430	SUPT. INSTL. "B" BAND ANTENNA
13	LDW280-28433	SUPT. INSTL. GOX TANK
14	LDW280-23434	FITTING INSTL. Ho SUPT. FWD
15	LDW280-23422	SUPT. INSTL.

ITEM	DRAWING	TITLE
22	LDW280-23425	TRUSS-RACK SPT-UPPER
23	LDW280-23426	" " " - INBOARD
24	LDW280-23428	" " " - OUTBOARD



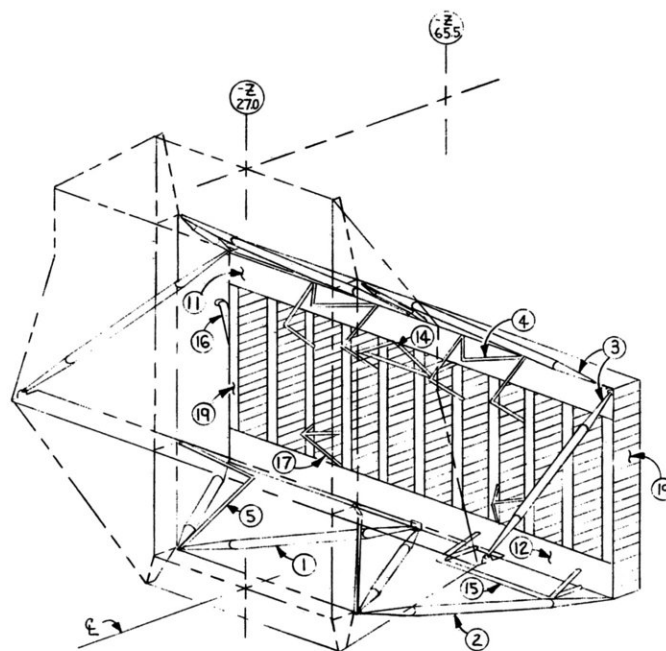
LM  
ASCENT STAGE  
AFT EQUIP BAY  
LM-4  
LDW280-54401

22 10-10-66  
 ENGINEERING SCHEDULING - E.F.M. 3-26-65

SK17-33-34

AFT EQUIP BAY STRUCT LDW 280-54401		
ITEM	DRAWING	TITLE
1	LDW 280-14222	TUBE RACK SUPT, INBOARD
2	LDW 280-14223	" " " OUTBOARD
3	LDW 280-14224	" " " , UPPER
4	LDW 280-23434	FITTING & HE SUPT INSTL
5	LDW 280-54405	RACK ASSEMBLY

⑤ RACK ASSEMBLY LDW 280-54405		
ITEM	DRAWING	TITLE
11	LDW 280-14112	BEAM ASSY HORZ UPR 272
12	LDW 280-14113	" " " LWR 233
14	LDW 280-23421	SUPT INSTL UPR CENT.
15	LDW 280-23422	" " " LWR OUTB.
16	LDW 280-23430	" " " 5" BAND ANT
17	LDW 280-23433	" " " GOX TANK
19	LDW 280-54406	BEAM ASSY VERT 4
	LDW 280-54407	" " " ±Y7
	LDW 280-54408	" " " ±Y14
	LDW 280-54409	" " " ±Y21
	LDW 280-54410	" " " ±Y28
	LDW 280-54411	" " " ±Y35



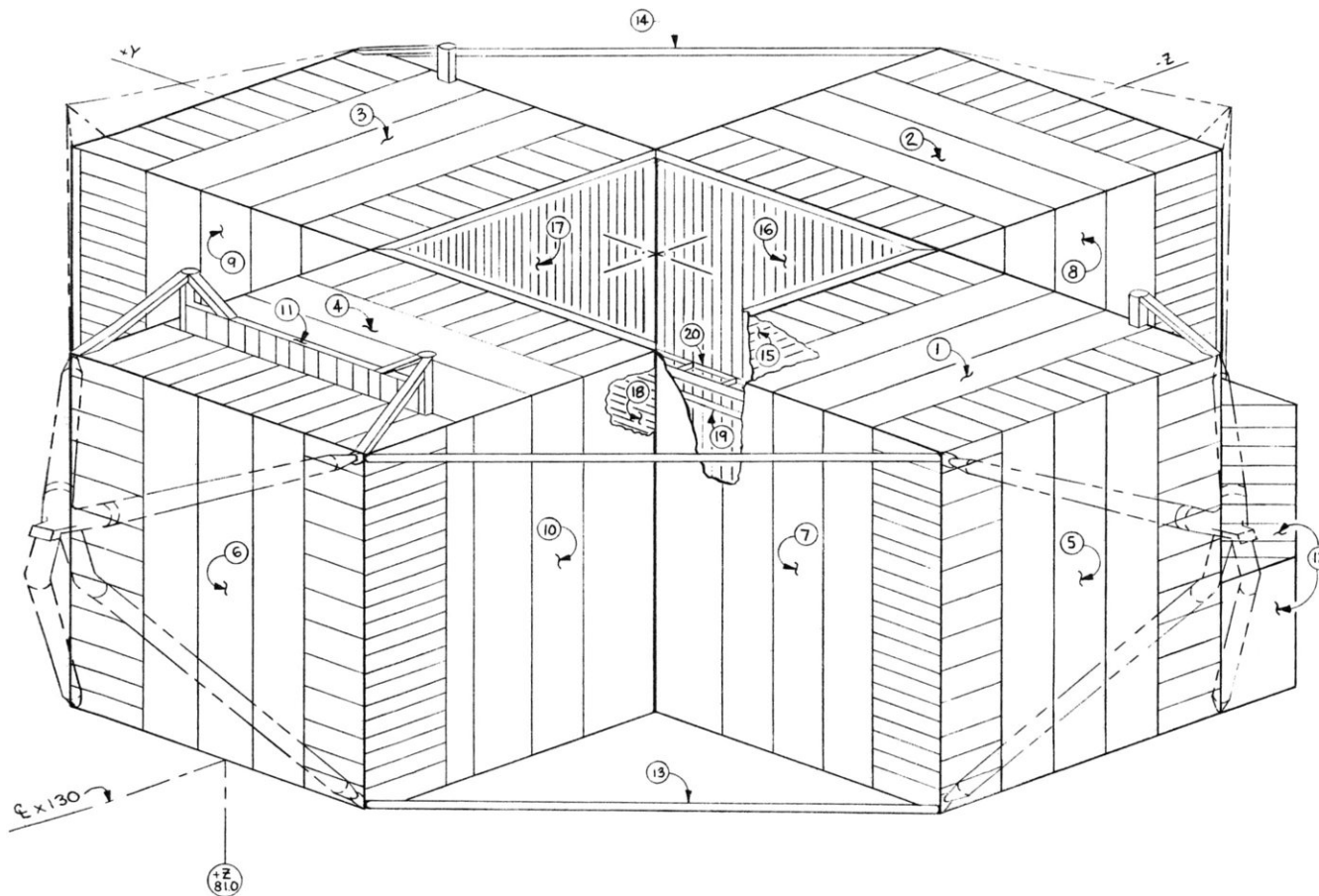
LM  
ASCENT STAGE  
AFT EQUIPMENT BAY  
LM-4

COMPLETE REVISION P.R.R. 7-11-67  
500-10-10-66  
ENGINEERING SCHEDULING FFM 326-65

SK 17-33-34

# DESCENT STAGE STRUCTURE INSTL LDW 280-54510

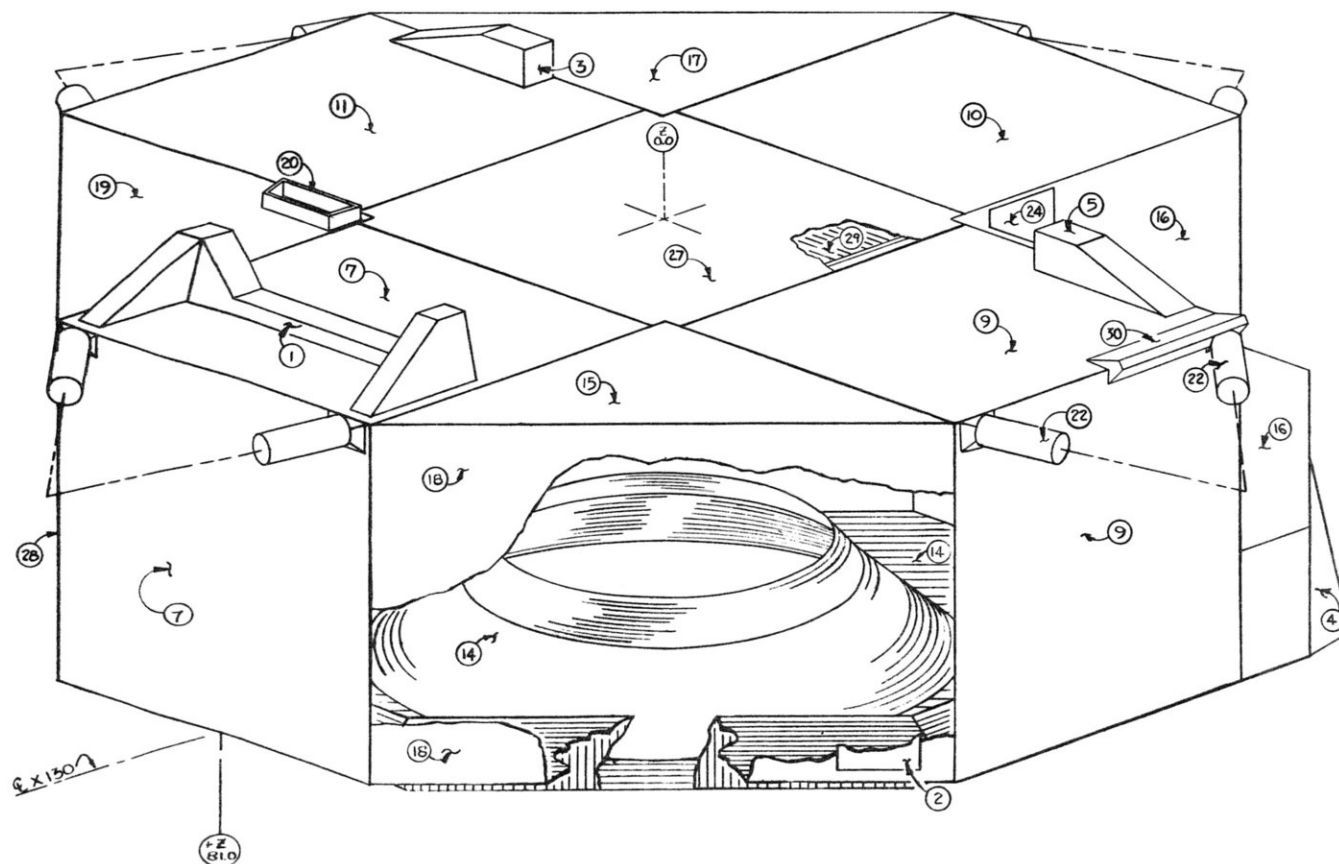
ITEM	DRAWING	TITLE	ITEM	DRAWING	TITLE	ITEM	DRAWING	TITLE
1	LDW 280-54521	DECK INSTL LH UPPER	8	LDW 280-23539	PANEL INSTL AFT LH	15	LDW 280-23538	PANEL INSTL ENGL H
2	LDW 280-54523	" " " AFT		LDW 280-23536	" " " R.H.	16	LDW 280-23532	" " " AFT
3	LDW 280-54520	" " " R.H.		LDW 280-54528	" " " R.H. FWD	17	LDW 280-23535	" " " R.H.
4	LDW 280-54522	" " " FWD	9	LDW 280-54531	" " " AFT	18	LDW 280-23527	" " " FWD
5	LDW 280-54525	BULKHEAD INSTL L.H.		LDW 280-54537	" " " FWD L.H.	19	LDW 280-23550	BEAM " " TRUSS
	LDW 280-54524	" " " R.H.	10	LDW 280-54534	" " " R.H.	20	LDW 280-23551	" " " AFT
	LDW 280-54526	" " " FWD	11	LDW 280-23540	BEAM ASSY SUPT			
6	LDW 280-54527	" " " AFT	12	LDW 280-23569	SUPT INSTL SCI. EQ BAY			
7	LDW 280-23530	PANEL INSTL LH FWD	13	LDW 280-23547	STRUT INSTL LWR			
	LDW 280-54533	" " " AFT	14	LDW 280-23549	" " " UPPER			



LM  
DESCENT STAGE  
STRUCTURE  
LM-4

PRR-7-1467  
ENGINEERING SCHEDULING 566-14-67  
WAS SK17 50-34 SK-17-51-34

DESCENT STAGE			THERMAL SHIELDING			LDW 280-54553		
ITEM	DRAWING	TITLE	ITEM	DRAWING	TITLE	ITEM	DRAWING	TITLE
1	LDW280-28644	FORWARD INTERSTAGE	14	LDW280-28661	BASE HEAT SHIELD INSTL.	27	LDW280-51860	SHIELD INSTL. ENG. COMP.
2	LDW280-28645	ACCESS COV. INSTL. PLSS.	15	LDW280-54664	SHIELD INSTL. QUAD. I	28	LDW280-28561	SHIELD INSTL. QUAD. II
3	LDW280-28646	BLANKET INSTL. AFT. RH. W/F.	16	LDW280-52665	SHIELD INSTL. QUAD. II	29	LDW280-52635	BLAST DEFLECTOR INSTL.
4	LDW280-52648	ACCESS COVER SEQ. DAY	17	LDW280-28666	SHIELD INSTL. QUAD. III	30	LDW280-28816	SHIELD INSTL. He TEST PT.
5	LDW280-28649	L.H. AFT. INTERSTAGE	18	LDW280-54558	" " " I			
			19	LDW280-28667	SHIELD INSTL. QUAD. IV			
7	LDW280-52656	FORWARD THERMAL	20	LDW280-51671	GUILLotine ACCESS COVER			
9	LDW280-51657	L.H. THERMAL	22	LDW280-28672	SHIELD INSTL. OUTRIGGER			
10	LDW280-52658	AFT. THERMAL						
11	LDW280-52659	R.H. THERMAL						
			24	LDW280-51818	SHIELD ASSY & INSTL.			



LM  
DESCENT STAGE  
THERMAL SHIELDING  
LM-4

P.R.R. 7-17-67  
ENGINEERING SCHEDULING 48-15-67 SK-17-52-34